

# Sukhi Dhami

Personal Real Estate Corporation

Web: [remg.ca](http://remg.ca)

Email: [sukhi@remg.ca](mailto:sukhi@remg.ca)

## 604.442.6000

HomeLife Benchmark Realty (Langley) Corp

# FOR SALE

## 30.77 ACRES - LAND PLAY

 46635 THORNTON RD  
CHILLIWACK



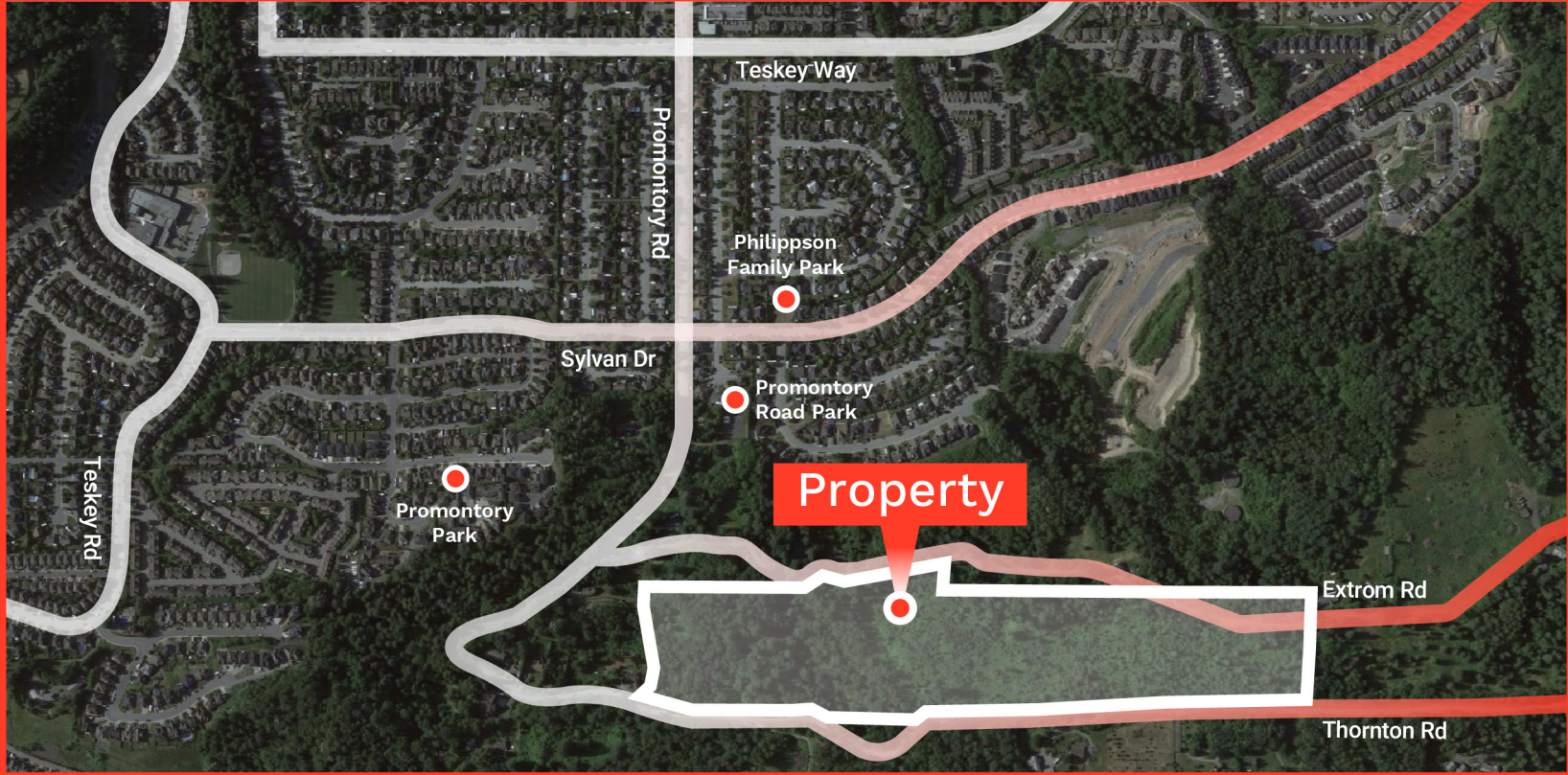
# REMG<sup>®</sup>

VANCOUVER



## Subject Property

30.77 ACRES | NOT IN THE ALR  
PROMONTORY AREA PROPERTY WITH VIEWS!  
BRING OUR IDEAS | UNIQUE LAND PLAY



# LOCATION AND OPPORTUNITY

- 30.77 Acres out of ALR, located just seconds from Chilliwack's 'Promontory' neighborhood.
- Sub-dividable holding property with great future potential.
- Bring your ideas!

## LOT SIZE

- 30.77 Acres

## ZONING

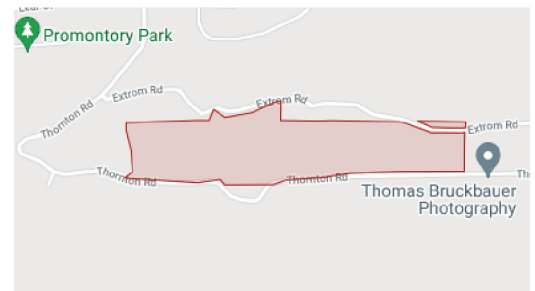
- R / Out of the ALR

## LEGAL DESCRIPTION

LOT 13, EXCEPT FIRSTLY: PART SUBDIVIDED BY PLAN 31703, SECONDLY: PART SUBDIVIDED BY PLAN 67767, AND THIRDLY: PART SUBDIVIDED BY PLAN 68749 SECTION 5 TOWNSHIP 26 NEW WESTMINSTER DISTRICT PLAN 28194

## PRICE

- Contact Agent



COMMERCIAL | ESTATES & ACREAGES | INDUSTRIAL | LAND PLAYS



E. & O.E.: The information contained herein was obtained from sources that we deem reliable and, while thought to be correct, is not guaranteed by the Vancouver Real Estate Marketing Group (VAN REMG) and Homelife Benchmark Realty (Langley) Corp. VAN REMG makes no warranty or representation whatsoever regarding the accuracy or completeness of the information provided. All potential buyers must take appropriate measures to verify all of the information set forth herein. This communication is not intended to cause or induce breach of an existing agency agreement.