

Sukhi Dhami

Personal Real Estate Corporation

Web: remg.ca

Email: sukhi@remg.ca

604.442.6000

HomeLife Benchmark Realty (Langley) Corp

FOR SALE

2.26 ACRES WITH HOME & SHOP

 30213 DOWNES ROAD
ABBOTSFORD



REMVG[®]

VANCOUVER



30213 DOWNES ROAD



Downes Rd.

2.26 ACRES | 2,421 SF HOME | 857 SF SHOP
CENTRAL MT. LEHMAN LOCATION
MUST VIEW TO APPRECIATE LANDSCAPE & LOCATION!



LOCATION AND OPPORTUNITY

- 2.26 Acres. Prime Location (Mt. Lehman / Downes).
- 2421 sqft, 4 Bedroom and 2.5 Bathroom Home.
- 850 sqft+ heated detached garage/shop. 368+ Road Frontage.
- Clean and well-maintained property, room for your trucks or equipment.
- Seconds to High Street Mall, easy access to USA Border and all amenities.
- Must see to appreciate central location and privacy offered by the landscape.

LOT SIZE

- 2.26 Acres

ZONING

- A1

DIMENSIONS

- Width: 368' (112m)
- Depth: 266' (81m)

PRICE

- Contact Agent



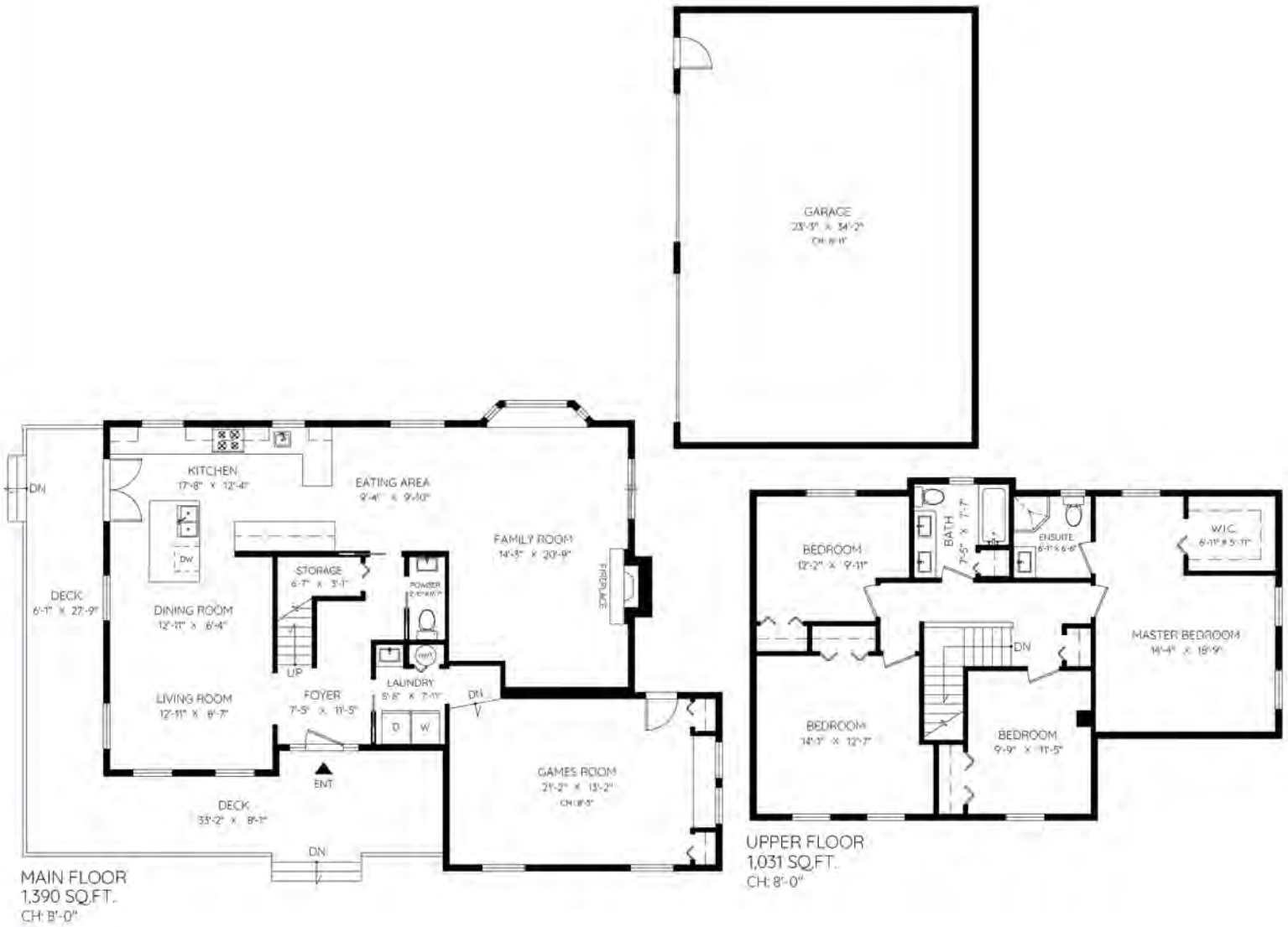
*Property lines are approximate.

30213 DOWNES ROAD

ABBOTSFORD, BC



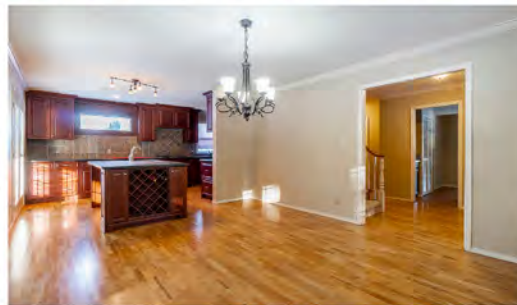
MAIN	1,390 SQ.FT.	GARAGE	857 SQ.FT.
UPPER	1,031 SQ.FT.	DECK	439 SQ.FT.
TOTAL	2,421 SQ.FT.	TOTAL	1,296 SQ.FT.



0 ft 5 ft 10 ft

The floor plan and the measurements are approximate within +/- 2% and are to be used for advertising usage only. May include unfinished area. Not suitable for architectural or construction. EQO Insured.





COMMERCIAL | ESTATES & ACREAGES | INDUSTRIAL | LAND PLAYS

E. & O.E.: The information contained herein was obtained from sources that we deem reliable and, while thought to be correct, is not guaranteed by the Vancouver Real Estate Marketing Group (VAN REMG) and Homelife Benchmark Realty (Langley) Corp. VAN REMG makes no warranty or representation whatsoever regarding the accuracy or completeness of the information provided. All potential buyers must take appropriate measures to verify all of the information set forth herein. This communication is not intended to cause or induce breach of an existing agency agreement.